

LINKÖPING/Malmen

RNP RWY 01

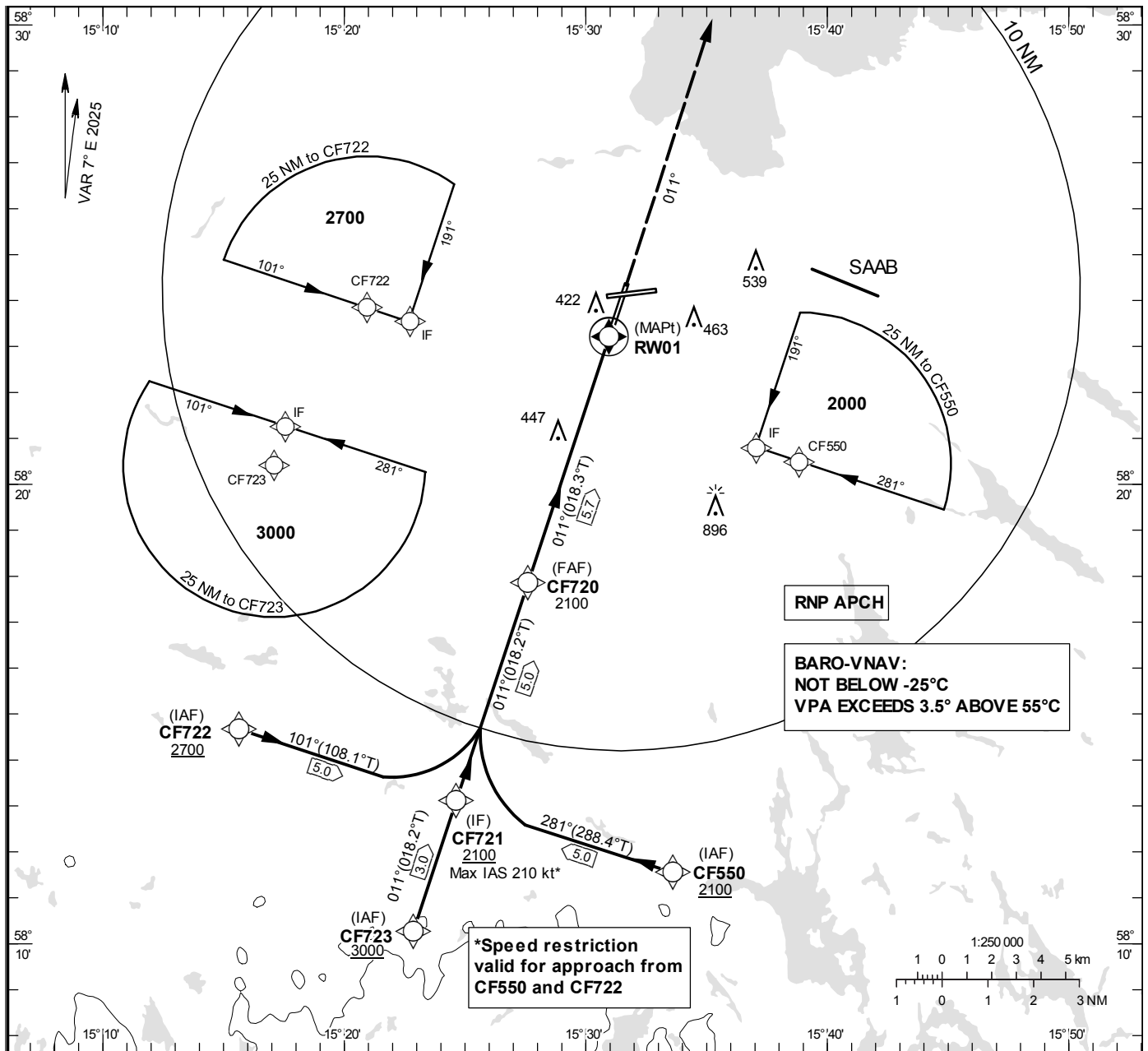
(LNAV/VNAV, LNAV only)

INSTRUMENT
APPROACH
CHART – ICAO

THR ELEV 250.7 ft, AD ELEV 309 ft

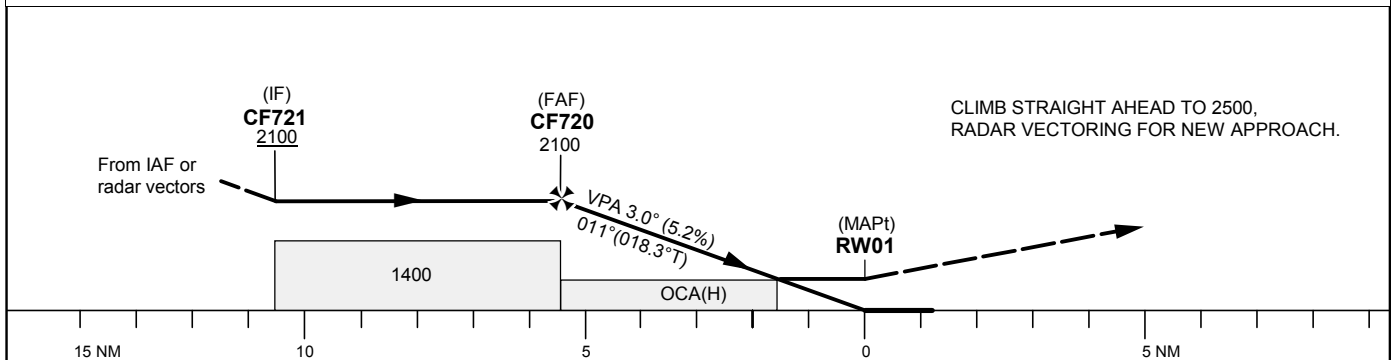
OCH are related to THR.
BRG are MAG (True).
ALT, HGT and ELEV in ft.

MALMEN TOWER	129.800
ÖSTGÖTA APPROACH	132.955
	135.850



TA 5000 ft AMSL

RDH 50 ft



OCA (H)					Final approach		Distance FAF - MAPt 5.7 NM			
Cat of ACFT	A	B	C	D	Dist to RWY 01		5	4	3	2
LNAV/VNAV	552 (302)	565 (315)	573 (323)	583 (333)	ALT		1890	1570	1260	940
LNAV	700 (450)				GS	kt	80	100	120	140
Circling	760 (460)	840 (540)	940 (640)	1290 (990)	Rate of descent	ft/min	425	530	635	745

CHANGE: Editorial

LINKÖPING/Malmen**RNP RWY 01 via CF550**

Path Desc	Waypoint Identifier	Fly-over	Course °M(°T)	Dist (NM)	Turn Dir	Altitude	Speed	VPA/RDH	Rec Navaid	Navigation Specification
IF	CF550	-	-	-	-	+2100	-	-	-	RNP APCH
TF	CF721	-	281°(288.4°)	5.0	-	-	-210	-	-	RNP APCH

RNP RWY 01 via CF723

Path Desc	Waypoint Identifier	Fly-over	Course °M(°T)	Dist (NM)	Turn Dir	Altitude	Speed	VPA/RDH	Rec Navaid	Navigation Specification
IF	CF723	-	-	-	-	+3000	-	-	-	RNP APCH
TF	CF721	-	011°(018.2°)	3.0	-	-	-	-	-	RNP APCH

RNP RWY 01 via CF722

Path Desc	Waypoint Identifier	Fly-over	Course °M(°T)	Dist (NM)	Turn Dir	Altitude	Speed	VPA/RDH	Rec Navaid	Navigation Specification
IF	CF722	-	-	-	-	+2700	-	-	-	RNP APCH
TF	CF721	-	101°(108.1°)	5.0	-	-	-210	-	-	RNP APCH

Path Desc	Waypoint Identifier	Fly-over	Course °M(°T)	Dist (NM)	Turn Dir	Altitude	Speed	VPA/RDH	Rec Navaid	Navigation Specification
IF	CF721	-	-	-	-	+2100	-	-	-	RNP APCH
TF	CF720	-	011°(018.2°)	5.0	-	+2100	-	-	-	RNP APCH
TF	RW01	Y	011°(018.3°)	5.7	-	@301	-	-3.0/50	-	RNP APCH
CA	-	-	011°(018.3°)	-	-	@2500	-	-	-	RNP APCH
VM	-	-	011°	-	-	-	-	-	-	RNP APCH